

0.704 Commercial Acres For Sale

Lewisville, TX



- Location:** NWQ of FM 3040 (Round Grove Rd.) and S. Valley Pkwy.
- Zoning:** “LC” – Local Commercial [Retail, Service or Office].
- Frontage:** 98’
- Adjacent Retail:** Bahama Bucks – Walgreens – McDonald’s – and directly across from a [Tom Thumb](#)
- Size:** 0.704 Acres (+/-30,666 SF).
- Price:** \$307,000 (\$10.00/SF).

For further information contact: Rich Muller



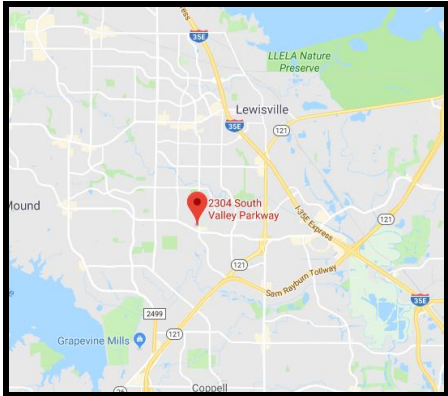
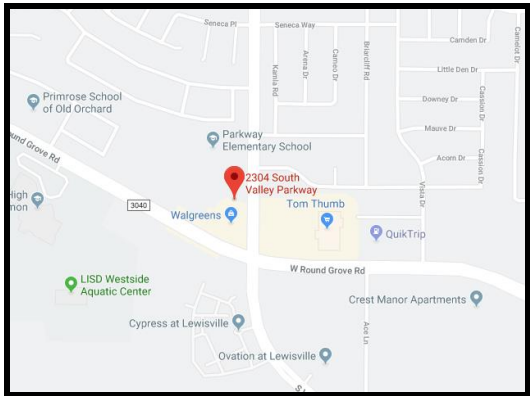
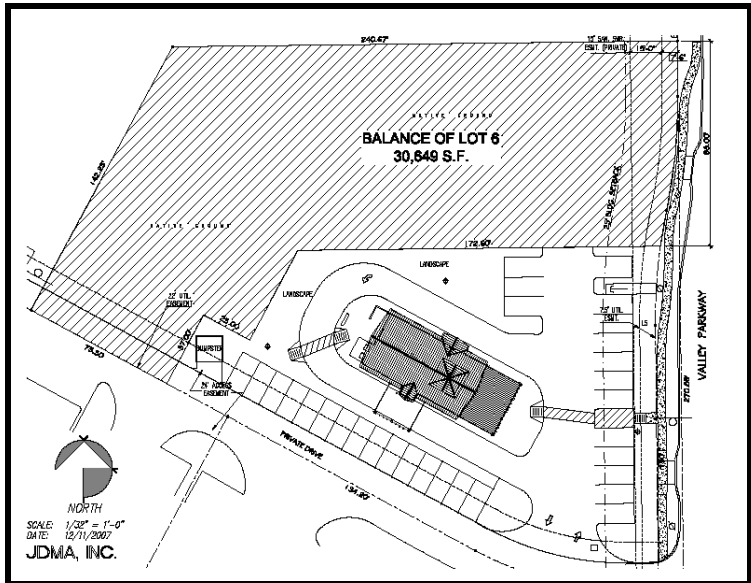
Vintage Realty

2980 Long Prairie Rd., Suite D

Flower Mound, TX 75022

972/355-0669 or Fax 972/355-5477

Email: Rich@VintageRealty.net or www.VintageRealty.net



This information is believed to be accurate, but no representation or warranty, express or implied, as to its accuracy or completeness is made by any party. The presentation of this property is submitted subject to errors, omissions, change of price or prior sale or lease, or withdrawal without notice.