

FREEWAY RETAIL BUILDING FOR SALE/LEASE

S.H. 114 - Grapevine, TX



721 W State Hwy 114, Grapevine, TX 76051

OFFERING: *Power Sports of Grapevine* (formerly "Grapevine Kawasaki"), will be relocating to a new facility currently under construction! Owner/Operator will "Leaseback" the property until March 2019, while their new home is being constructed.

SALE PRICE: \$2,195,000.

LEASING PRICE: \$14.00/SF + NNN's.

LAND: 60,114 SF (1.38 acres).

BUILDING: 13,000 SF (100' x 130').

FRONTAGE: 192.5'.

AGE: 2004.

AMENITIES: Heavy power; 8-5 ton & 1-3 ton Trane A/C's; attic storage; 34 parking spaces; pole sign.

For further information contact: **Rich Muller**



Vintage Realty

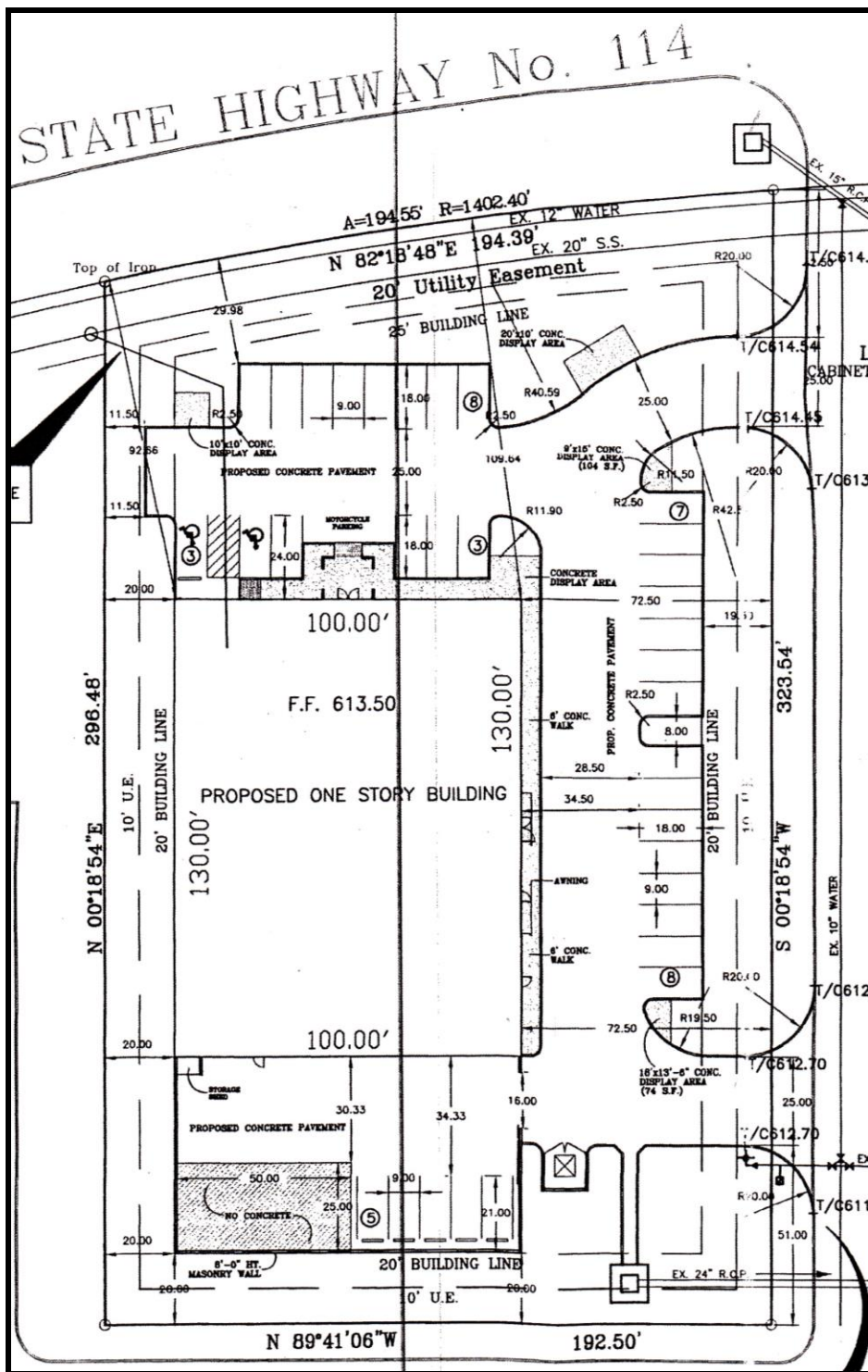
2980 Long Prairie Rd., Suite D

Flower Mound, TX 75022

972/355-0669 or Fax 972/355-5477

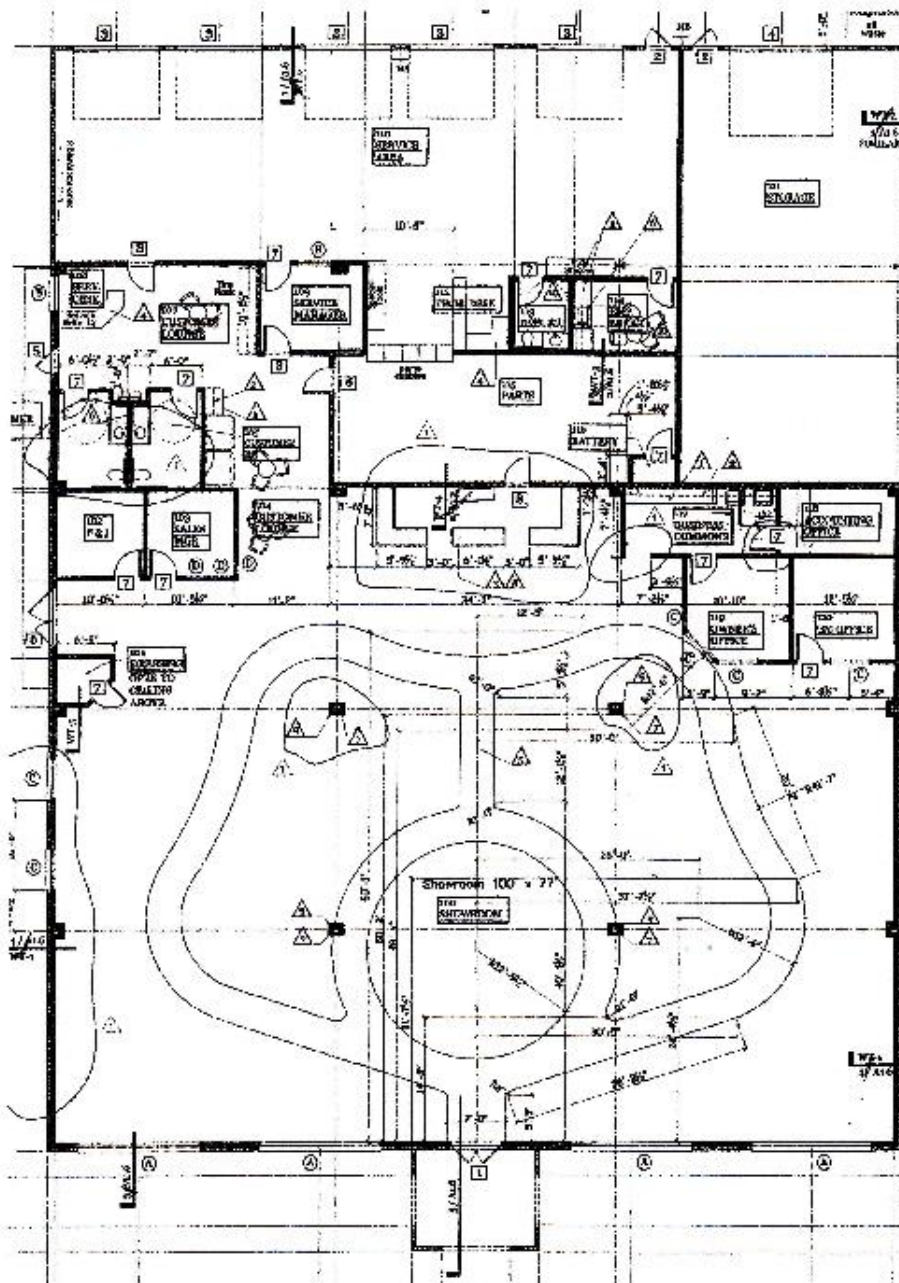
Email: Rich@VintageRealty.net or Web Site: www.VintageRealty.net

Site Plan



This information is believed to be accurate, but no representation or warranty, express or implied, as to its accuracy or completeness is made by any party. The presentation of this property is submitted subject to errors, omissions, change of price or prior sale or lease, or withdrawal without notice.

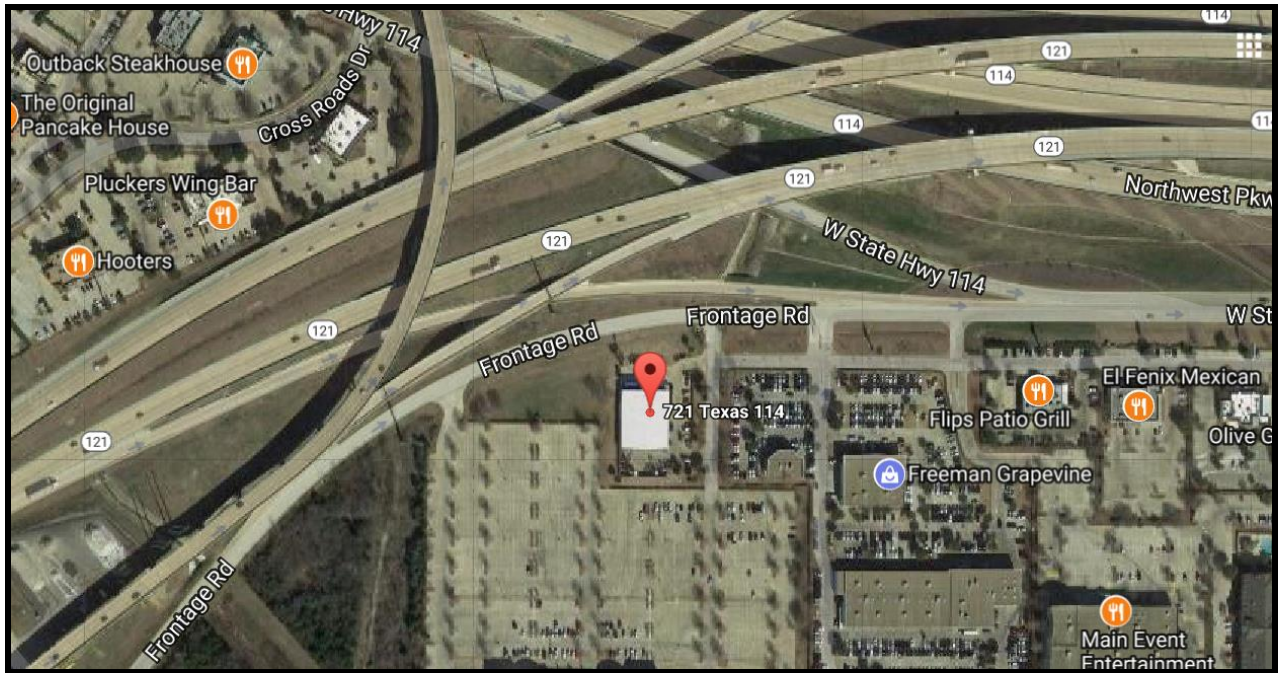
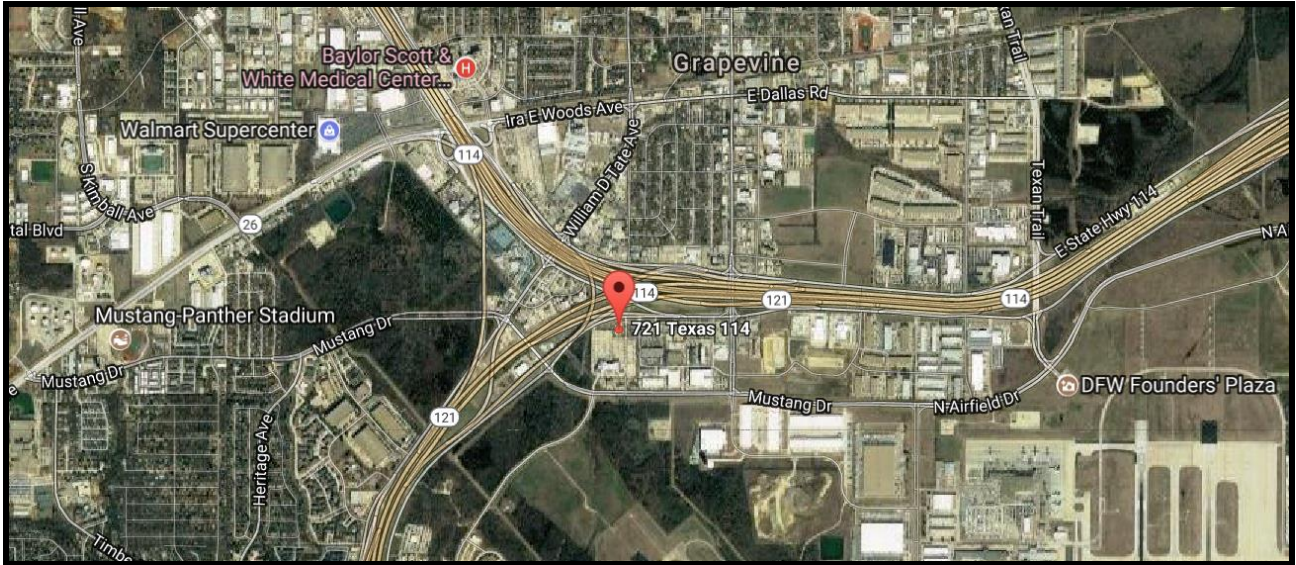
Floor Plan



S.H. 114 Service Road

This information is believed to be accurate, but no representation or warranty, express or implied, as to its accuracy or completeness is made by any party. The presentation of this property is submitted subject to errors, omissions, change of price or prior sale or lease, or withdrawal without notice.

Aerial



This information is believed to be accurate, but no representation or warranty, express or implied, as to its accuracy or completeness is made by any party. The presentation of this property is submitted subject to errors, omissions, change of price or prior sale or lease, or withdrawal without notice.