

# DENTAL SPACE FOR LEASE

Lewisville, TX



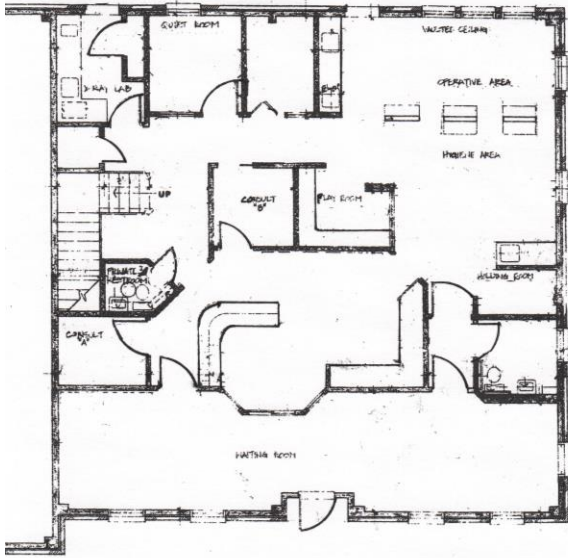
- Location:** 326 Edmonds Lane, Suite 101, Lewisville, TX 75067.
- Size:** 2,560 SF.
- Floor Plan:** Main Floor – 1,960 SF: Waiting Room; Play Room; 3 Operatives + a Quiet Room; X-Ray and 2 Consult Rooms.  
Loft: - 600 SF: Dr.'s Office and Employee Lounge.
- Rent:** \$14.00 per square-foot + NNN's.
- Available:** NOW!

For further information contact: Rich Muller

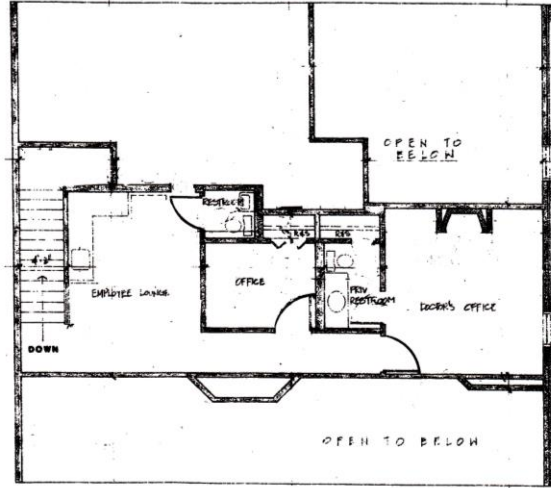


**Vintage Realty**  
2980 Long Prairie Rd., Suite D  
Flower Mound, TX 75022  
972/355-0669 or Fax 972/355-5477  
E-mail: [Rich@VintageRealty.net](mailto:Rich@VintageRealty.net) or [www.VintageRealty.net](http://www.VintageRealty.net)

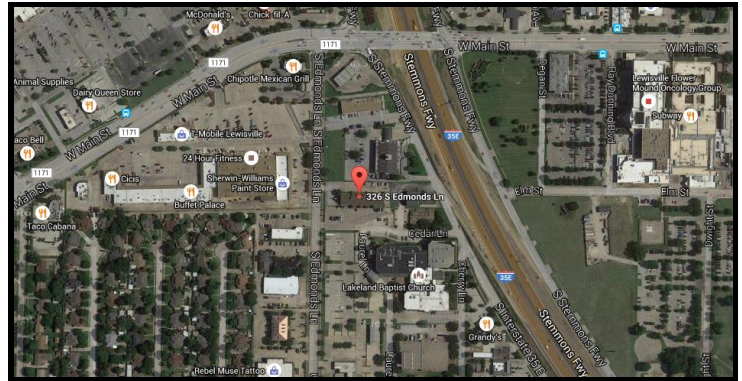
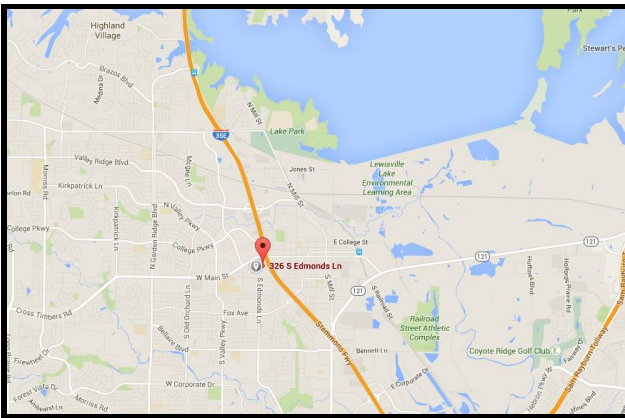
This information is believed to be accurate, but no representation or warranty, express or implied, as to its accuracy or completeness is made by any party. The presentation of this property is submitted subject to errors, omissions, change of price or prior sale or lease or withdrawal without notice.



Main Floor



Loft



This information is believed to be accurate, but no representation or warranty, express or implied, as to its accuracy or completeness is made by any party. The presentation of this property is submitted subject to errors, omissions, change of price or prior sale or lease or withdrawal without notice.