

+/-5,000 SF OFFICE CONDOS

[TO BE BUILT]

\$135/SF – “SHELL”

Flower Mound, TX



(Building sample)

Location: 3201 Cross Timbers Rd. (FM 1171).
The “new” **Presbyterian Hospital** is 3 minutes away!!!!
The **Continuum Rehab Hospital** is virtually next door!

Project: **TANGLEWOOD PLAZA!**
Phase I is **SOLD OUT** and developed!!!
Only 2 pads remaining!! Lots 5 & 6!!
All utilities are stubbed!! Parking is in!
Design and Build!

For further information contact: **Rich Muller**



Vintage Realty

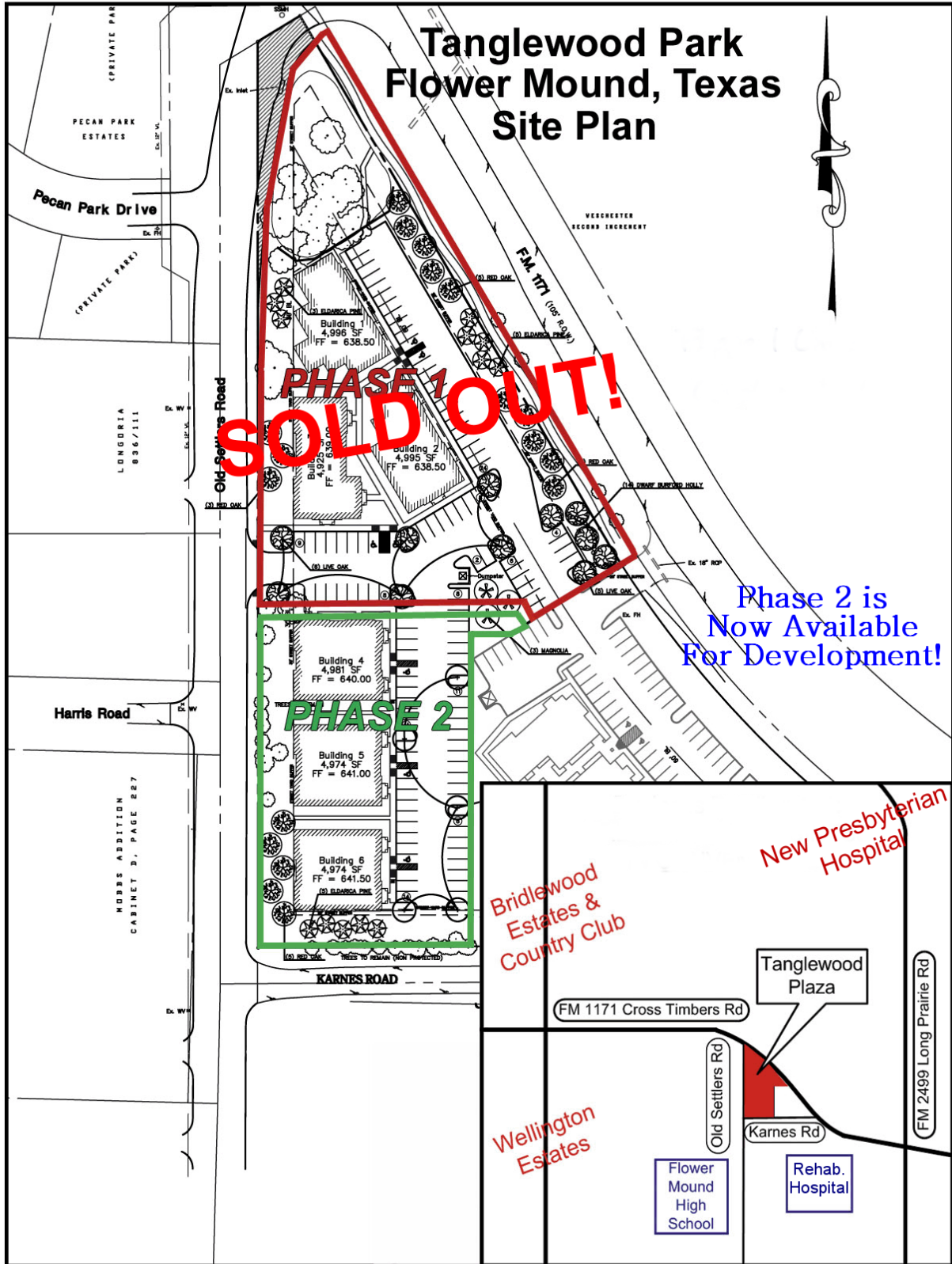
2980 Long Prairie Rd., Suite D

Flower Mound, TX 75022

972/355-0669 or Fax 972/355-5477

Email: Rich@VintageRealty.net or www.VintageRealty.net

This information is believed to be accurate, but no representation or warranty, express or implied, as to its accuracy or completeness is made by any party. The presentation of this property is submitted subject to errors, omissions, change of price or prior sale or lease, or withdrawal without notice.



This information is believed to be accurate, but no representation or warranty, express or implied, as to its accuracy or completeness is made by any party. The presentation of this property is submitted subject to errors, omissions, change of price or prior sale or lease, or withdrawal without notice.