

1,520 SF
“NEW” MEDICAL OFFICE SPACE
FOR LEASE
Old Town, Lewisville, TX

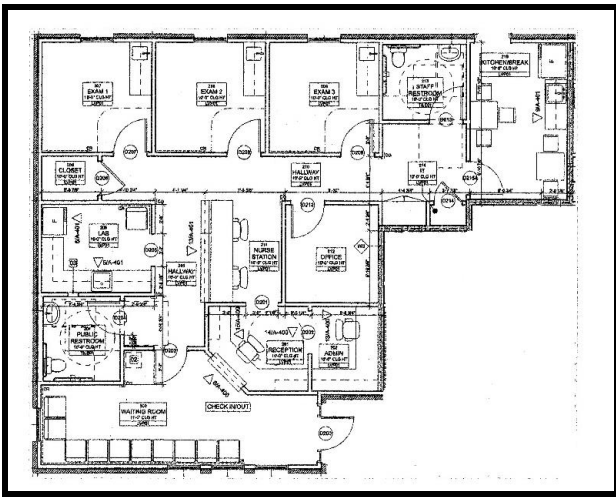


- LOCATION:** 273 W. Church St., Lewisville TX. Easy walking distance to restaurants and Main St. Space is “brand new” and completely built out as a medical office.
- AVAILABLE:** Suite 200 – Reception; 3 Exam Rooms; Nurses’ Station; Lab; Break Room & Private Office. Restroom for Patients and one for Staff.
- RENT:** \$17 .50/SF/Yr. plus NNNs.
- PARKING:** 4.85/1,000 SF.
- SIGNAGE:** Signage on the building façade facing Church St.

For further information contact: Rich Muller



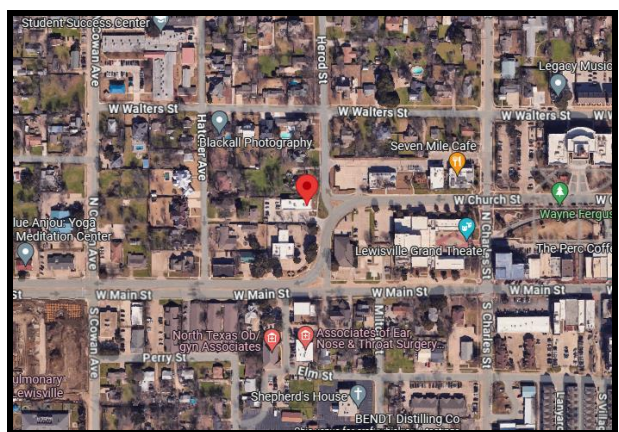
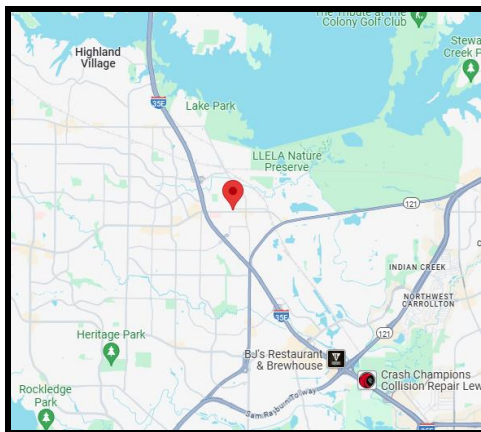
Vintage Realty
2980 Long Prairie Rd., Suite D
Flower Mound, TX 75022
972/355-0669 or Fax 972/355-5477
Email: Rich@VintageRealty.net ; Web Site: www.VintageRealty.net



Reception Check-in/Out



Exam Room



This information is believed to be accurate, but no representation or warranty, express or implied, as to its accuracy or completeness is made by any party. The presentation of this property is submitted subject to errors, omissions, change of price or prior sale or lease, or withdrawal without notice.