

Office Space for Lease

2670 Firewheel Drive
Flower Mound, Texas



LOCATION: 2670 Firewheel Drive, Suites A & B (NEQ of FM 2499 and Firewheel Drive). Located in a beautiful office park with lush trees and a quiet setting. Exposure on Firewheel Drive!

SPACE AVAILABLE: Suite A: 1,944 SF;
Suite B: 2,458 SF
4,402 SF Total!

LEASE RATE: \$16.00/SF + NNNs.

AVAILABLE: Immediately!

For further information contact: Rich Muller



Vintage Realty

2980 Long Prairie Road, Suite D

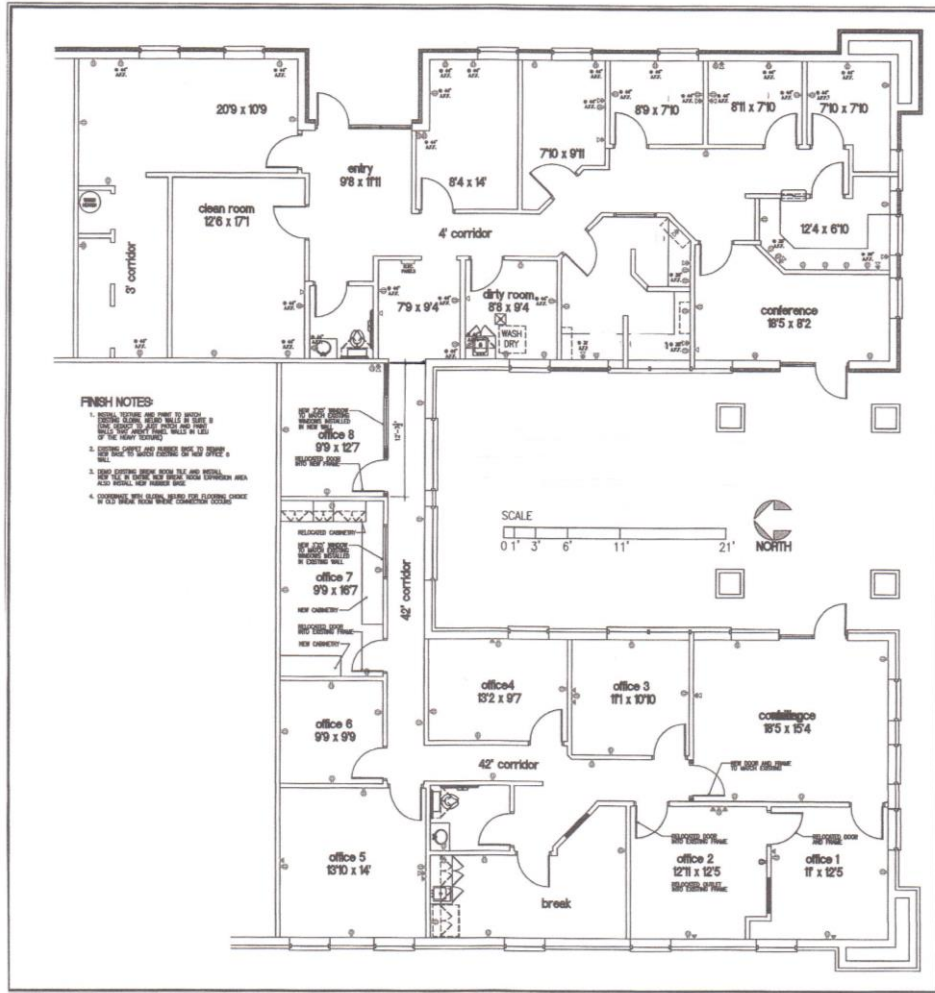
Flower Mound, TX 75022

972/355-0669 or Fax 972/355-5477

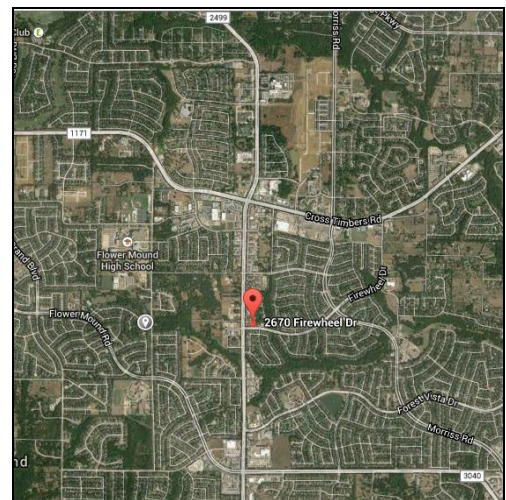
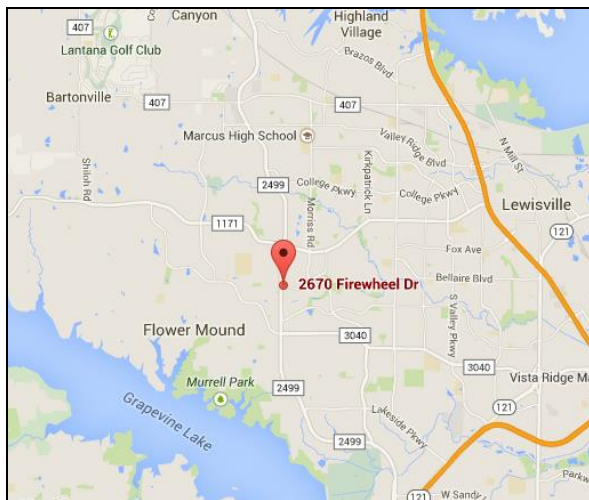
email: Rich@VintageRealty.net ; www.VintageRealty.net

This information is believed to be accurate, but no representation or warranty, express or implied, as to its accuracy or completeness is made by any party. The presentation of this property is submitted subject to errors, omissions, change of price or prior sale or lease, or withdrawal without notice.

Suite B



Suite A



This information is believed to be accurate, but no representation or warranty, express or implied, as to its accuracy or completeness is made by any party. The presentation of this property is submitted subject to errors, omissions, change of price or prior sale or lease, or withdrawal without notice.