

## 2 - Office Executive Suites FOR LEASE!

Sagebrush Office Park - Flower Mound, TX



**LOCATION:** 2609 Sagebrush Drive, Flower Mound, TX; located on SEQ of Long Prairie Rd. (FM 2499) and Sagebrush Dr. (Lighted Intersection).

**EXPENSES:** **Utilities, taxes and maintenance paid by Landlord!!** Tenant only pays for telephone and Internet (plus janitorial for their Suite).

<b><u>2609</u></b>	Suite 202 -	505 SF	\$1,075.00/month - 2 offices
	Suite 204 -	550 SF	\$1,100.00/month - 2 offices
	Suite 206 -	627 SF	\$1,300.00/month - 2 offices (1 corner)

**For further information contact: Rich Muller**



**Vintage Realty**

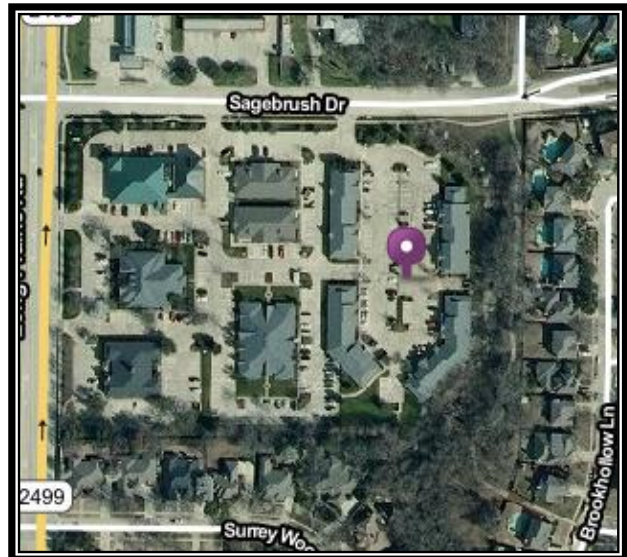
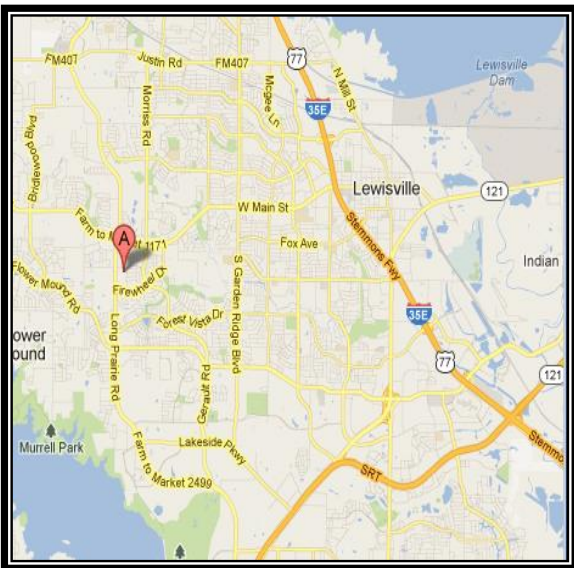
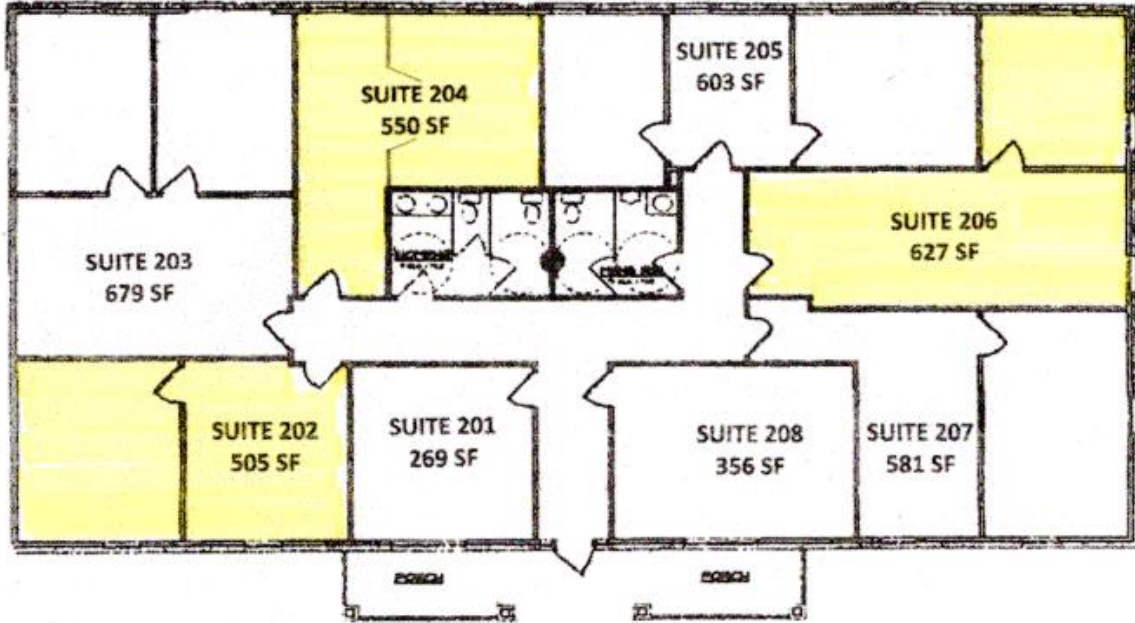
2980 Long Prairie Rd., Suite D

Flower Mound, TX 75022

972/355-0669 or Fax 972/355-5477

Email: [Rich@VintageRealty.net](mailto:Rich@VintageRealty.net) Web Site: [www.VintageRealty.net](http://www.VintageRealty.net)

## 2609 Sagebrush Dr.



This information is believed to be accurate, but no representation or warranty, express or implied, as to its accuracy or completeness is made by any party. The presentation of this property is submitted subject to errors, omissions, change of price or prior sale or lease, or withdrawal without notice.